

- Short delivery times
- Can be used in Zone 1 without acceptance testing or certification
- For 24 V DC and 120/230 V AC
- Ready for use, prefabricated with entries, BusRails, connection terminals, etc.
- Modifications, extensions and customer-specific adaptations are possible

MY R. STAHL 8150D



With the IS1+ standard enclosures for Zone 1, we offer you a variety of prefabricated field enclosures made from 1.4301 stainless steel (V2A). They include all entries, BusRails, cable ducts, CPM sockets and connection terminals for auxiliary power.

Once the IS1+ components (available separately) have been installed, the enclosures can be used in Zone 1 without acceptance testing, and they fulfil the requirements of EN 61439.

Zone	IECEX / ATEX					
	0	1	2	20	21	22
Installation in		•	•			

Selection Table					
Installation	Zone 1				
Dimensions (WxHxD)	Built-in unit 1	Product Type	Art. No.	Weight	
400 x 750 x 300 mm	1 x BusRail for 6 slots (1 x CPM, 5 x I/O – modules)	8150/5-0400-0750-300-2321	282642	30 kg	
400 x 1300 x 300 mm	1 x BusRail for 10 slots (1 x CPM, 8 x I/O – modules)	8150/5-0400-1300-300-2321	282460	50 kg	
600 x 600 x 230 mm	1 x BusRail for 8 slots (1 x CPM, 7 x I/O – modules)	8150/5-0600-0600-230-2321	244142	35 kg	
760 x 760 x 300 mm	1 x BusRail for 10 slots (1 x CPM, 8 x I/O – modules)	8150/5-0760-0760-300-2321	244144	55 kg	
800 x 1000 x 300 mm	2 x BusRail for 8 slots (2 x CPM, 14 x I/O – modules)	8150/5-0800-1000-300-2321	244146	70 kg	

Technical Data	
Explosion Protection	
IECEX gas explosion protection	Ex db eb ib [ia Ga, ib] IIC T4 Gb
ATEX gas explosion protection	Ⓔ II 2 (1) G Ex db eb ib [ia Ga, ib] IIC T4 Gb
Certificates	ATEX (PTB), IECEX (PTB), India (PESO)
Declaration of Conformity	ATEX (EUK), China (CCC)
Auxiliary Power	
Auxiliary power rated operating voltage	230 V AC (90 to 253 V AC) 24 V DC (20 to 35 V DC)
Auxiliary power nominal current	Max. 2.5 A @ 24 V DC Max. 0.5 A @ 230 V AC
Auxiliary power rated current	Depending on installed modules IS1+ (see corresponding data sheet)

Technical Data

Ambient Conditions

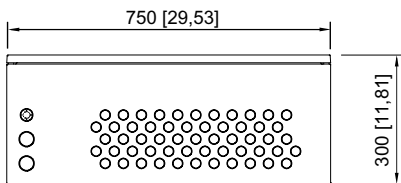
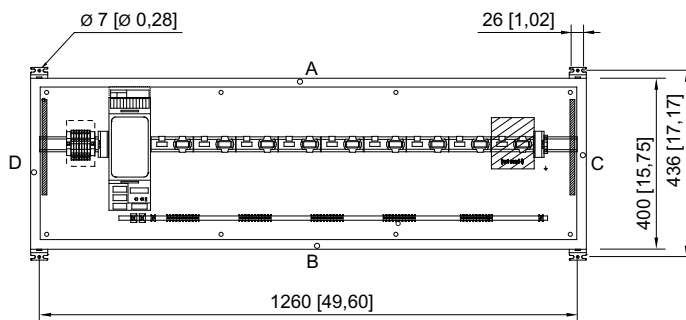
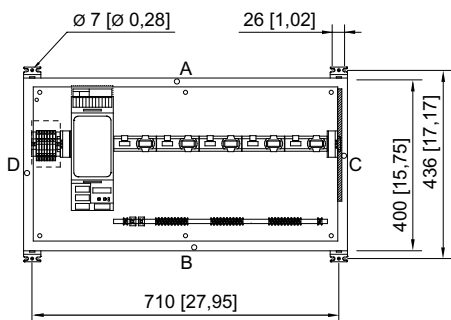
Ambient temperature -20°C ... +55°C

Mechanical Data

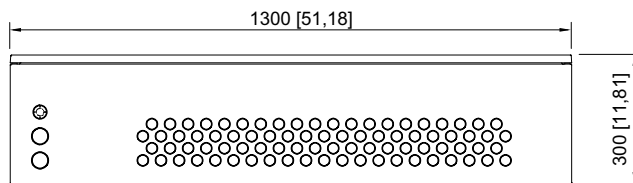
Degree of protection (IP) (IEC 60529) IP65

Enclosure material Stainless steel 1.4301, (V2A, AISI 304)
Brush finished

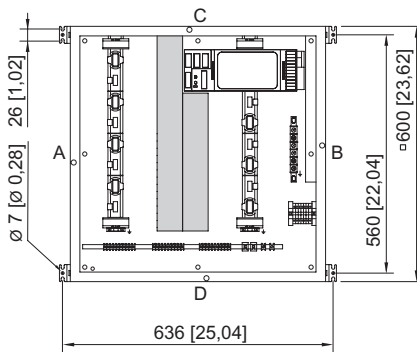
Dimensional Drawings (All Dimensions in mm [inches]) – Subject to Alterations



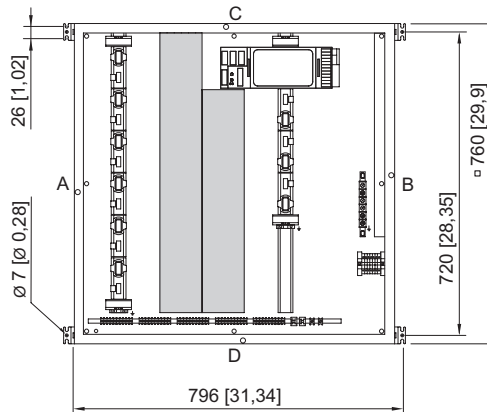
1 x BusRail for 6 slots
Item no. 282462



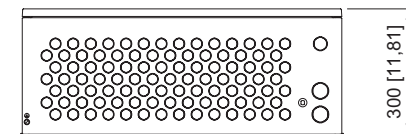
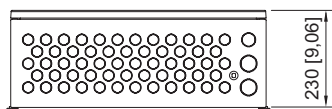
1 x BusRail for 10 slots
Item no. 282460



1 x BusRail for 8 slots
Item no. 244142



1 x BusRail for 10 slots
Item no. 244144

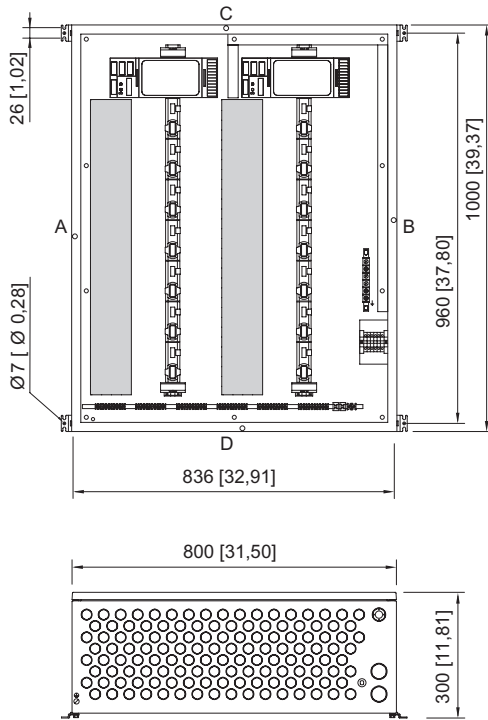


Standard enclosure Zone 1 for remote I/O

Series 8150



A4



2 x BusRail for 8 slots
Item no. 244146